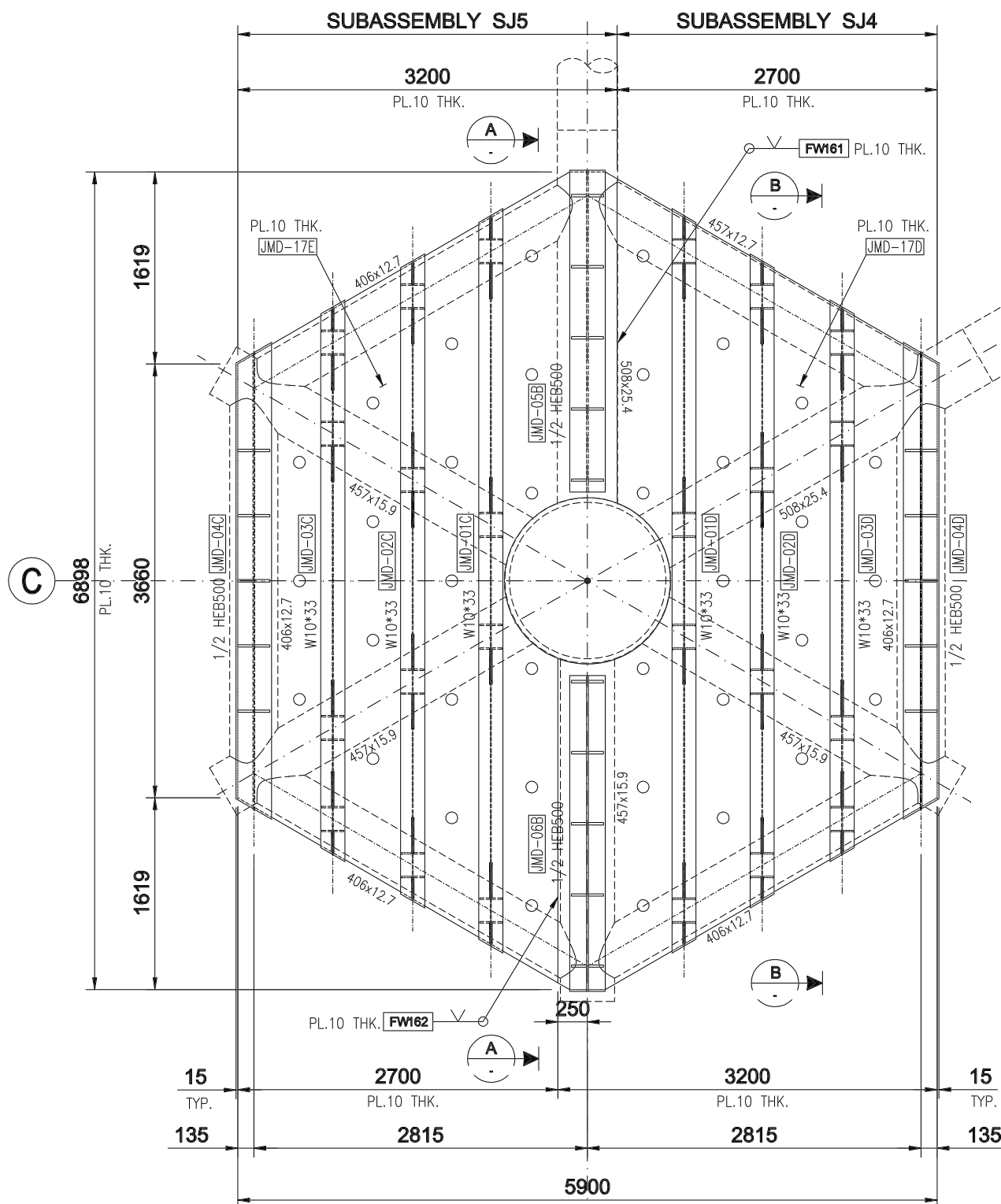
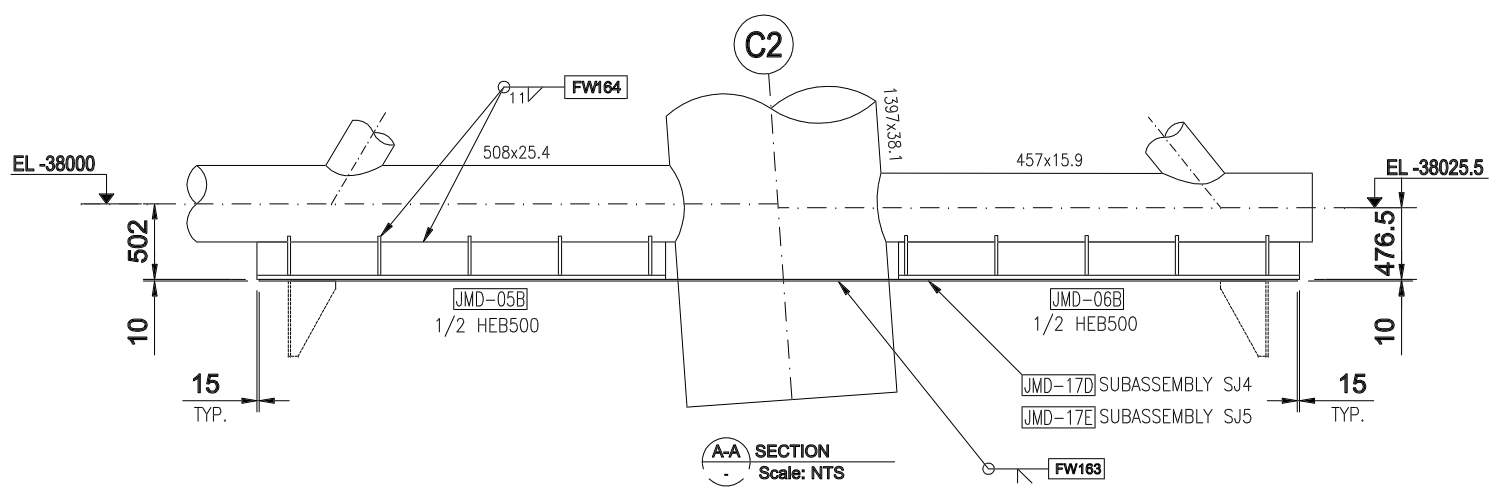


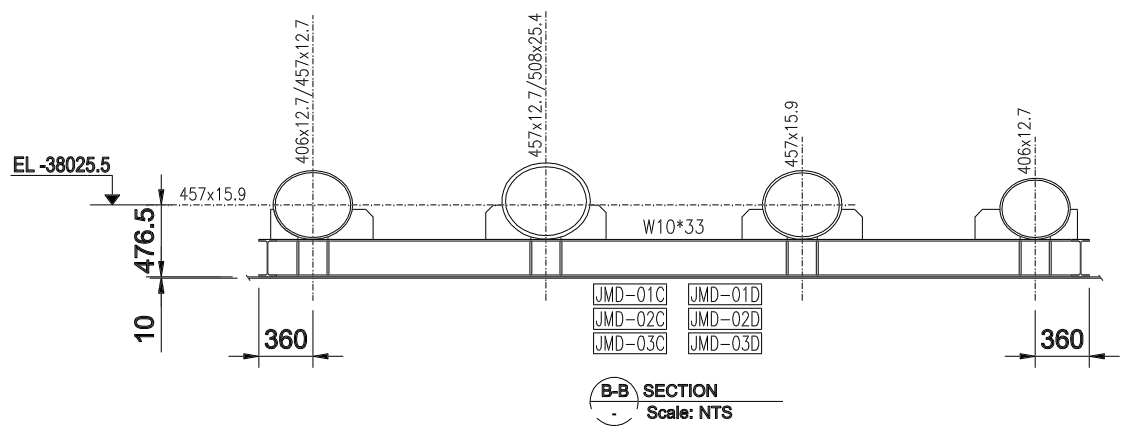
This drawing and the design it covers are the property of PETROMAR. They are merely loaned and on the borrower's express agreement that they will not be reproduced, copied, loaned, exhibited, nor used except in the limited way and private use permitted by any written consent given by the lender to the borrower.



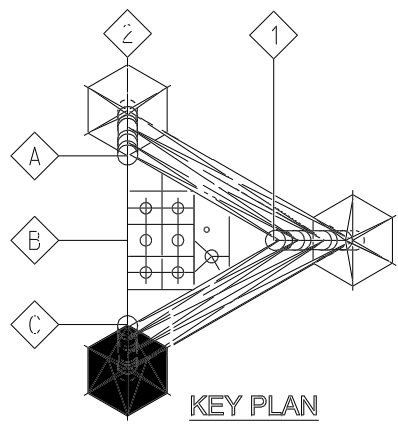
PLAN AT MUDMAT C2
(MUDMAT BEAM)



A-A SECTION
Scale: NTS



B-B SECTION
Scale: NTS



KEY PLAN

NOTES

- 1 - ALL DIMENSIONS ARE IN MILLIMETRES U.N.O.
- 2 - ALL ELEVATIONS ARE REFERRED TO MEAN LOW WATER (M.L.W.) ± 0.00 m.
- 3 - THE SYMBOL FWxx INDICATES WELDS TO BE PERFORMED IN SHOP
- 4 - WELD NUMBER: FW161 - FW164

Contractors:		Saipem s.a. Petromar <small>TECHNICAL OFFICE - SOYO, YARD</small>	
Document title:		JACKET ASSEMBLY PLAN AT MUDMAT C2 - MUDMAT BEAM	
Contractor's documentation identification:			
Job N°	Origin	Unit	Discipline
F33099	PTM	100	STR
Doc. Type	Seq. Num.	Sheet	Rev.
ASD	1200	7-9	1

AO-042-SC-070-039022	01	JACKET- MUDMAT DETAILS	1	05-MAR-09	APPROVED FOR CONSTRUCTION	ICV	NAR	MMF	ADV/DMOI
REF. DOC. N°	REV	REFERENCE DOCUMENT TITLE	Rev.	Date DD-MM-YY	Revision Description	Originator Visa	Checker Visa	Approval Visa	Project Visa

Scale:	N.T.S.
Original Paper size:	A3
Plotter:	A1 - A3 -
Company:	TOTAL E&P ANGOLA ANGOLA - BLOCK 17
Project name:	BLOCK 2 SINGLE CENTRAL PLATFORM (SCP)
Company's contract N°:	N/A
Product:	N/A
Type of document:	DRAWING
Company's document identification:	-