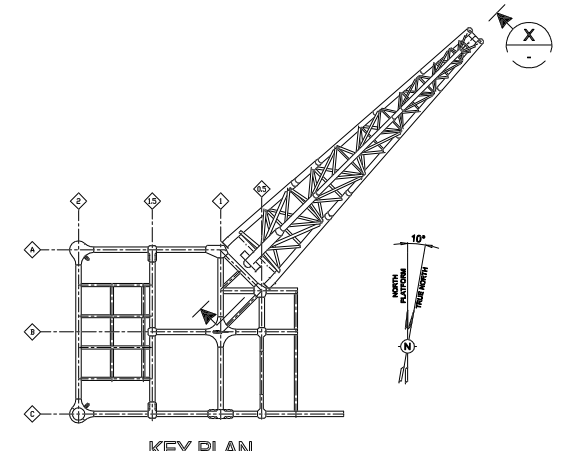
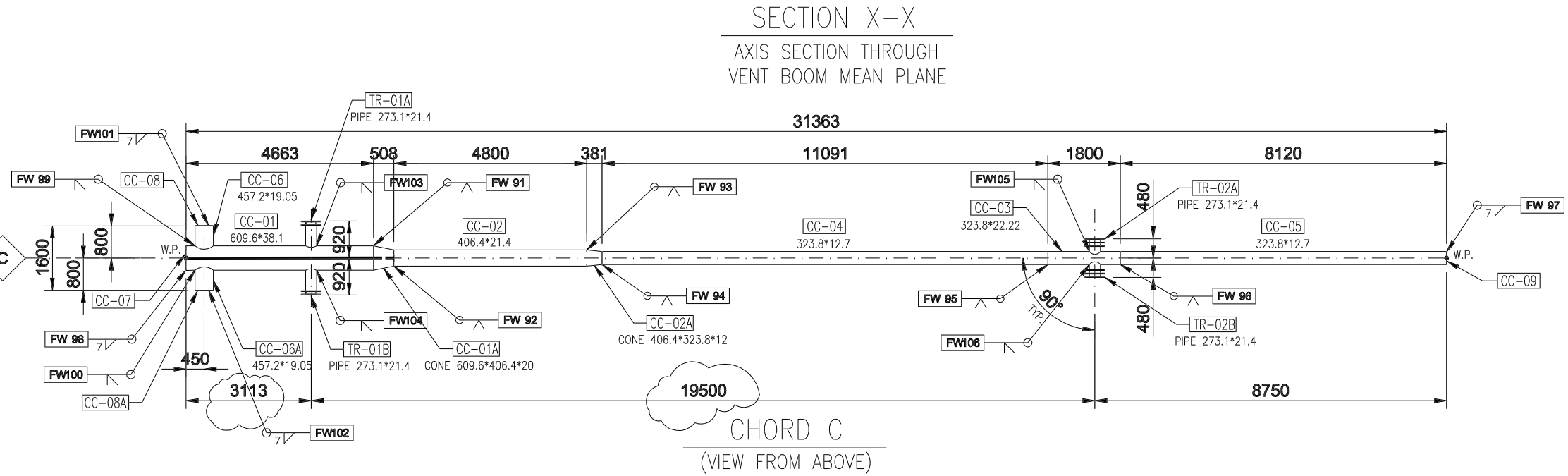
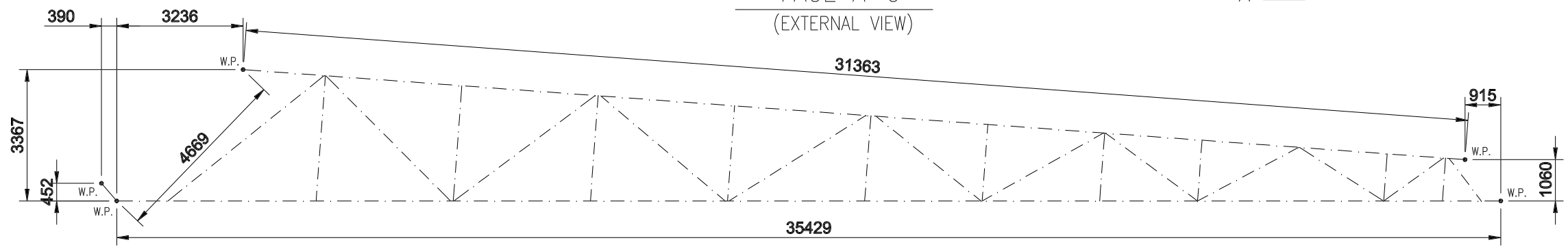
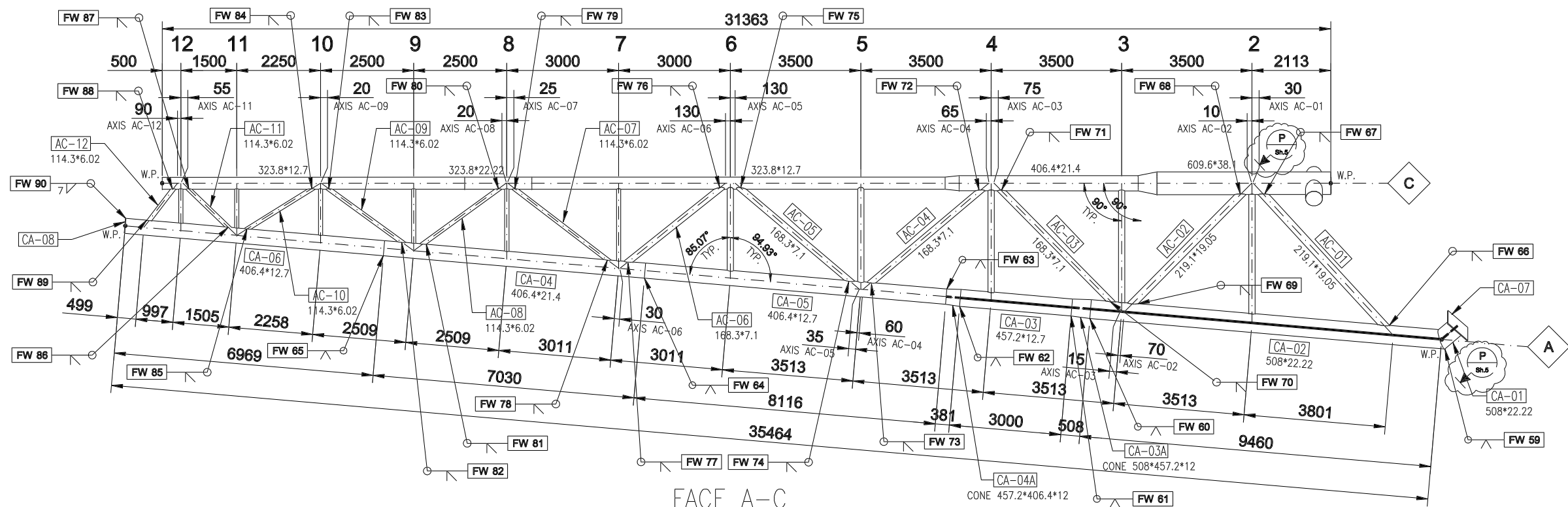


This drawing and the design it covers are the property of PETROMAR. They are merely loaned and on the borrower's express agreement that they will not be reproduced, copied, loaned, exhibited, nor used except in the limited way and private use permitted by the lender to the borrower.



- ### NOTES
- 1 - ALL DIMENSIONS ARE IN MILLIMETRES U.N.O.
  - 2 - ALL ELEVATIONS ARE REFERRED TO MEAN LOW WATER (M.L.W.) ± 0.00 m.
  - 3 - THE SYMBOL FWxx INDICATES WELDS TO BE PERFORMED IN FIELD
  - 4 - WELD NUMBER: FW59 - FW106
  - 5 - LONGITUDINAL WELD N.S.
  - 6 - LONGITUDINAL WELD F.S.
  - 7 - FOR MATERIAL LIST SEE Sh.3

REF. DOC. N°	REV	REFERENCE DOCUMENT TITLE	Rev.	Date DD-MM-YY	Revision Description	ICV	NAR	MMF	ADV/DMOI
	2			05-JUN-09	REVISED I.A.W. CLIENT REVISION	ICV	NAR	MMF	ADV/DMOI
	1			01-FEB-09	APPROVED FOR CONSTRUCTION	ICV	NAR	MMF	ADV/DMOI

Scale: **N.T.S.**

Original Paper size: **A3**

Plotter: **A1 - A3**

Company: **TOTAL E&P ANGOLA ANGOLA - BLOCK 17**

Project name: **BLOCK 2 SINGLE CENTRAL PLATFORM (SCP)**

Company's contract N°: **N/A** Product: **N/A** Type of document: **DRAWING**

Contractors: **Eni Salpem sa. Petromar**

Document title: **VENT BOOM PRIMARY STEEL - ASSEMBLY FACE "A-C" & CHORD C**

Job N°	Origin	Unit	Discipline	Doc. Type	Seq. Num.	Sheet	Rev.
F33099	PTM	400	STR	ASD	4200	2-5	2