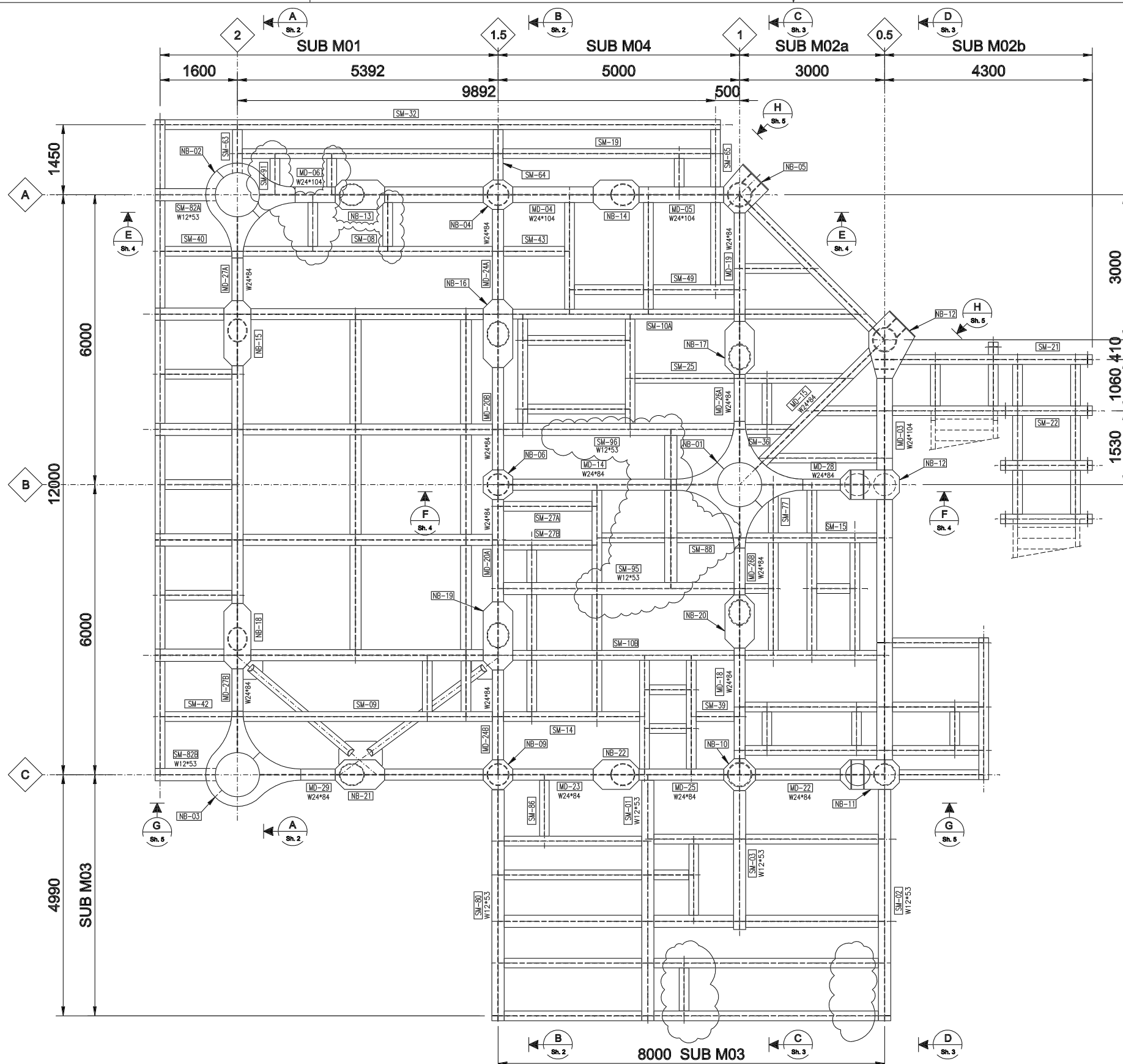


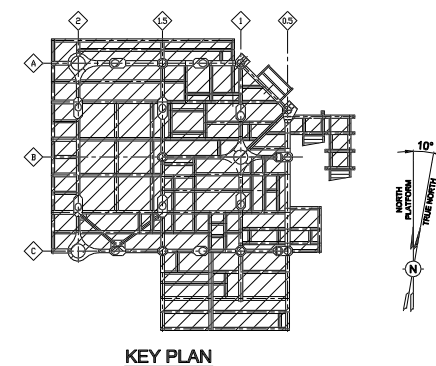
This drawing and the design it covers are the property of PETROMAR. They are merely loaned and on the borrower's express agreement that they will not be reproduced, copied, loaned, exhibited, nor used except in the limited way and private use permitted by the lender to the borrower.



PLAN - MAIN DECK T.O.S. EL.+15000
ASSEMBLY "MD01"

MATERIAL LIST

MARK	ITEM	DESCRIPTION	N° OF PIECES	MAT. TYPE	WEIGHT (Kg.)
SUB M01		SEE DWG. F33099-PTM-200-STR-SAD-2103_2	1		14245
SUB M02a		SEE DWG. F33099-PTM-200-STR-SAD-2104_1	1		8879
SUB M02b		SEE DWG. F33099-PTM-200-STR-SAD-2105_1	1		1041
SUB M03		SEE DWG. F33099-PTM-200-STR-SAD-2106_2	1		3283
SUB M04		SEE DWG. F33099-PTM-200-STR-SAD-2107_2	1		6415
NB-01			1		2990
NB-02			1		2857
NB-03			1		2857
RA-B01, RA-B02		SEE DWG. F33099-PTM-200-STR-MKD-2150_1	4		2562
RC-B01, RC-B02					
RA-C01,RC-C01,RO5-C01		SEE DWG. F33099-PTM-200-STR-MKD-2151_1	3		2823
RA-C05,RA-C01A,RC-C01B		SEE DWG. F33099-PTM-200-STR-MKD-2152_1	5		2900
RC-C11, RB-B01					
RC-B03,RC-C10,RC-C05		SEE DWG. F33099-PTM-200-STR-MKD-2153_1	3		1221
R1-B01A,R1-B01B,RC-B10		SEE DWG. F33099-PTM-200-STR-MKD-2154_1	3		2428
R15-B01A, R15-B01B		SEE DWG. F33099-PTM-200-STR-MKD-2155_1	2		1375
R2-B01A, R2-B01B		SEE DWG. F33099-PTM-200-STR-MKD-2156_1	2		1170
RFL-B01A, RFL-B01B		SEE DWG. F33099-PTM-200-STR-MKD-2157_1	2		724
TOTAL WEIGHT					57770



NOTES

- ALL DIMENSIONS ARE IN MILLIMETRES U.N.O.
- ALL ELEVATIONS ARE REFERRED TO MEAN LOW WATER (M.L.W.) ± 0.00 m.
- THE SYMBOL Wxx INDICATES WELDS TO BE PERFORMED IN FIELD

Scale: N.T.S. Original Paper size: A3 Plotter: A1, A3		Company: TOTAL E&P ANGOLA ANGOLA - BLOCK 17 		Contractors: Salpem sa. TECHNICAL OFFICE - SOYO, YARD	
Project name: BLOCK 2 SINGLE CENTRAL PLATFORM (SCP)		Document title: DECK MAIN DECK ASSEMBLY - MD01		Contractor's documentation identification:	
Company's contract N°: N/A Product: N/A Type of document: DRAWING		Job N°: F33099 Origin: PTM Unit: 200 Discipline: STR Doc. Type: ASD Seq. Num.: 2201 Sheet: 1-6 Rev.: 2			
Company's document identification:					

REF. DOC. N°	REV	REFERENCE DOCUMENT TITLE	Rev.	Date DD-MM-YY	Revision Description	Originator	ICV	JES	MMF	ADVD/MDI
F33099-PTM-200-STR-ASD-2300	01	DECK - ERECTION								
F33099-PTM-200-STR-SAD-2103	02	DECK - MAIN DECK - SUBASSEMBLY - M01								
F33099-PTM-200-STR-SAD-2104	01	DECK - MAIN DECK - SUBASSEMBLY - M02a								
F33099-PTM-200-STR-SAD-2105	01	DECK - MAIN DECK - SUBASSEMBLY - M02b								
F33099-PTM-200-STR-SAD-2106	02	DECK - MAIN DECK - SUBASSEMBLY - M03	2	05-MAR-09	REVISED I.A.W. CLIENT REVISION		ICV	JES	MMF	ADVD/MDI
F33099-PTM-200-STR-SAD-2107	02	DECK - MAIN DECK - SUBASSEMBLY - M04	1	15-FEB-09	APPROVED FOR CONSTRUCTION		ICV	JES	MMF	ADVD/MDI