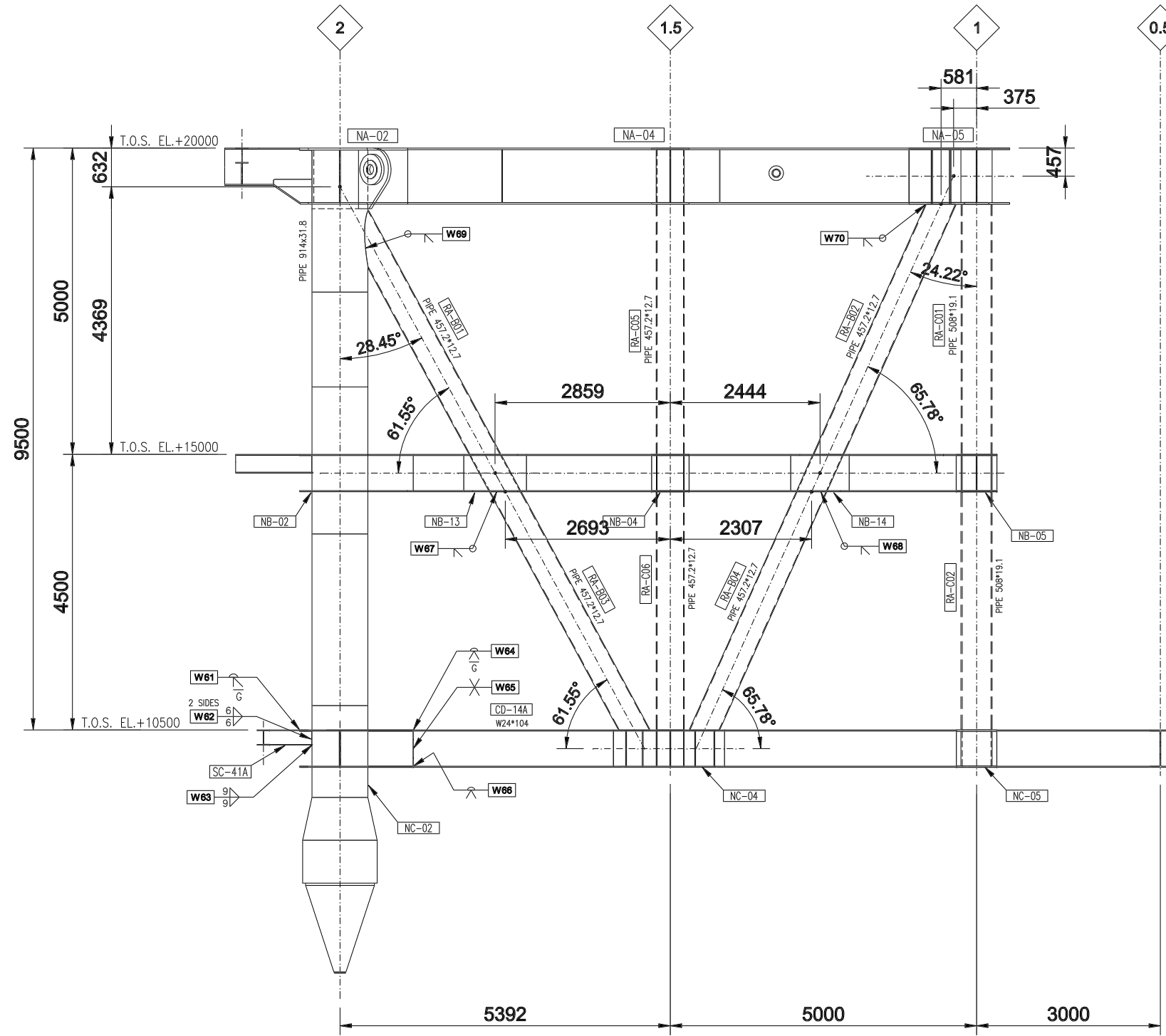
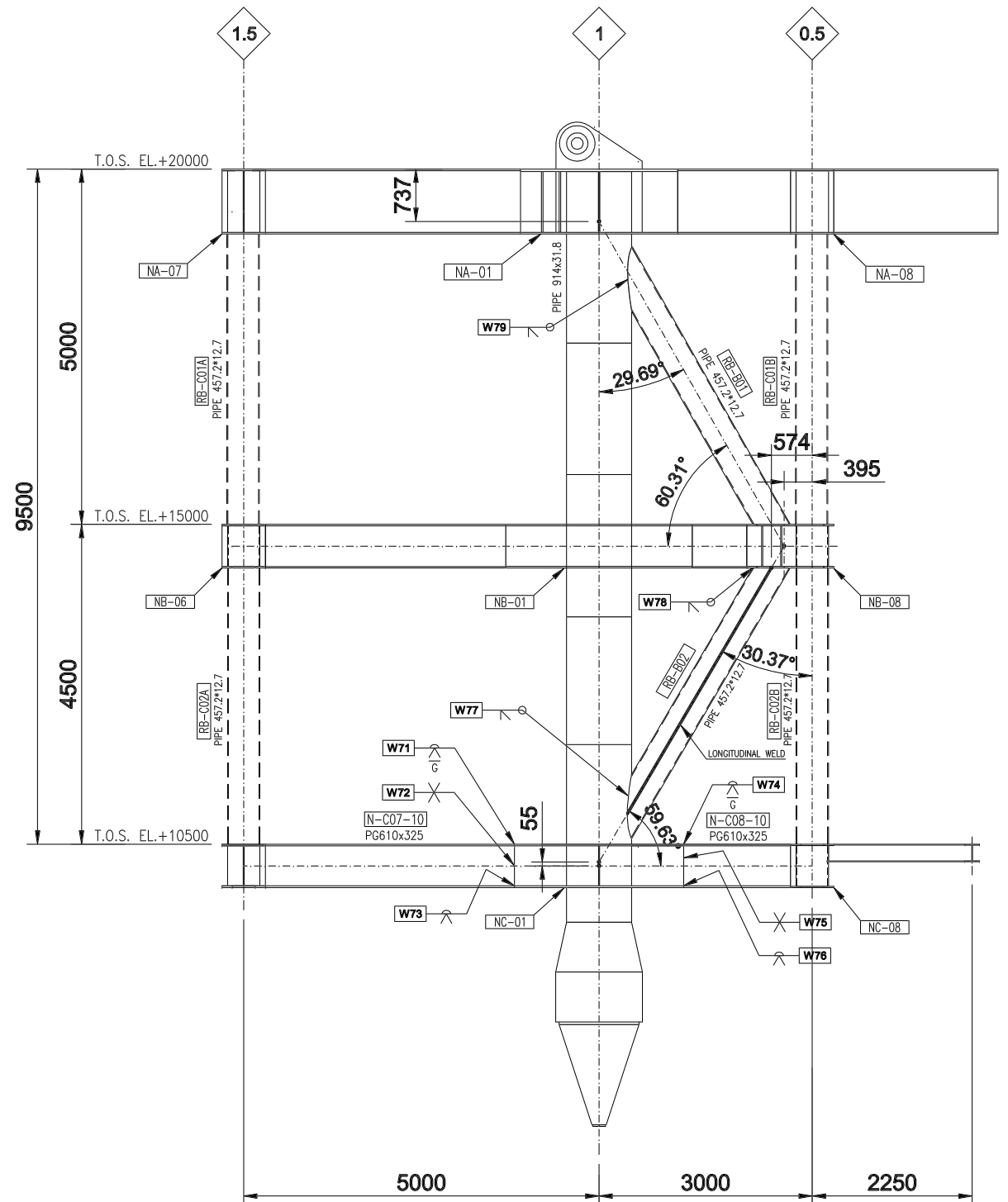


This drawing and the design it covers are the property of PETROMAR. They are merely loaned and on the borrower's express agreement that they will not be reproduced, copied, loaned, exhibited, nor used except in the limited way and private use permitted by the lender to the borrower.



E-E SECTION ROW A
Sh. 1 Scale: NTS



F-F SECTION ROW B
Sh. 1 Scale: NTS

- NOTES**
- 1 - ALL DIMENSIONS ARE IN MILLIMETRES U.N.O.
 - 2 - ALL ELEVATIONS ARE REFERRED TO MEAN LOW WATER (M.L.W.) ± 0.00 m.
 - 3 - THE SYMBOL Wxx INDICATES WELDS TO BE PERFORMED IN FIELD
 - 4 - LONGITUDINAL WELD N.S.
 - 5 - LONGITUDINAL WELD F.S.
 - 6 - WELD NUMBER: W61 - W79

REF. DOC. N°	REV	REFERENCE DOCUMENT TITLE	Rev.	Date	Revision Description	Originator	Checker	Approval	Project
DO	MM	YY				Visa	Visa	Visa	Visa
F33099-PTM-200-STR-ASD-2200	02	DECK - CELLAR DECK - ASSEMBLY CD01							
F33099-PTM-200-STR-ASD-2201	02	DECK - MAIN DECK - ASSEMBLY MD01	2	15-MAR-09	REVISED Sh.1, 2, 5 & 6 I.A.W. CLIENT REVISION	ICV	NAR	MMF	ADV/DMOI
F33099-PTM-200-STR-ASD-2202	01	DECK - UPPER DECK - ASSEMBLY UD01	1	25-FEB-09	APPROVED FOR CONSTRUCTION	ICV	NAR	MMF	ADV/DMOI

Scale:	N.T.S.	Company:	TOTAL E&P ANGOLA ANGOLA - BLOCK 17	Contractors:	Eni Saipem s.a. Petromar TECHNICAL OFFICE - SOYO, YARD					
Original Paper size:	A3	Project name:	BLOCK 2 SINGLE CENTRAL PLATFORM (SCP)	Document title:	DECK ERECTION ELEVATION ROW A & B					
Plotter:	A1 - A3 -	Company's contract N°:	N/A	Product:	N/A					
		Type of document:	DRAWING							
		Company's document identification:	-							
		Contractor's documentation identification:	Job N°	Origin	Unit	Discipline	Doc. Type	Seq. Num.	Sheet	Rev.
			F33099	PTM	200	STR	ERD	2300	8-9	2