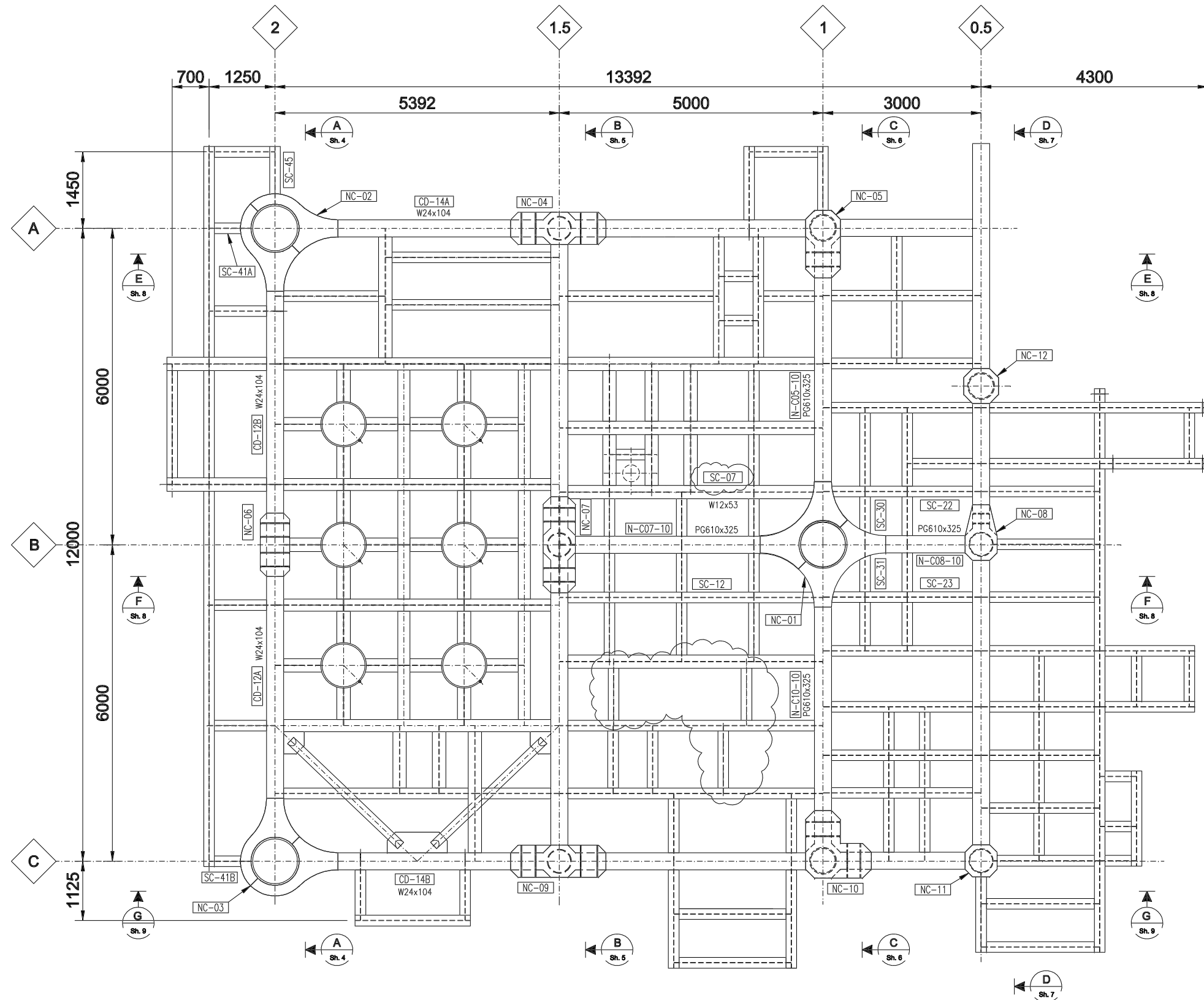
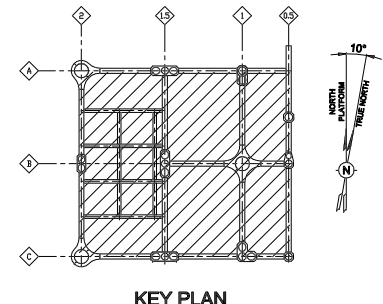


This drawing and the design it covers are the property of PETROMAR. They are merely loaned and on the borrower's express agreement that they will not be reproduced, copied, loaned, exhibited, nor used except in the limited way and private use permitted by the lender to the borrower.

MATERIAL LIST					
MARK	ITEM	DESCRIPTION	N° OF PIECES	MAT. TYPE	WEIGHT (Kg.)
ASSEMBLY CD01		SEE DWG. F33099-PTM-200-STR-ASD-2200_1	1		49919
ASSEMBLY MD01		SEE DWG. F33099-PTM-200-STR-ASD-2201_1	1		57039
ASSEMBLY UD01		SEE DWG. F33099-PTM-200-STR-ASD-2202_1	1		67341
RB-B02		SEE DWG. F33099-PTM-200-STR-MKD-2153_1	1		611
SM-100 + SM-102		SEE DWG. F33099-PTM-200-STR-MKD-2158_1	3		443
SU-81, SU-82		SEE DWG. F33099-PTM-200-STR-MKD-2159_1	2		305
TOTAL WEIGHT					175658



PLAN - CELLAR DECK T.O.S. EL.+10500
ERECTION
ALL MARKED BEAMS ARE W10x33 EXCEPT AS NOTED



NOTES

- 1 - ALL DIMENSIONS ARE IN MILLIMETRES U.N.O.
- 2 - ALL ELEVATIONS ARE REFERRED TO MEAN LOW WATER (M.L.W.) ± 0.00 m.
- 3 - THE SYMBOL Wxx INDICATES WELDS TO BE PERFORMED IN FIELD

REF. DOC. N°	REV	REFERENCE DOCUMENT TITLE	Rev.	Date DD-MM-YY	Revision Description	ICV	NAR	MMF	ADV/DMCI
F33099-PTM-200-STR-ASD-2200	02	DECK - CELLAR DECK - ASSEMBLY CD01							
F33099-PTM-200-STR-ASD-2201	02	DECK - MAIN DECK - ASSEMBLY MD01							
F33099-PTM-200-STR-ASD-2202	01	DECK - UPPER DECK - ASSEMBLY UD01							
	2			15-MAR-09	REVISED I.A.W. CLIENT REVISION	ICV	NAR	MMF	ADV/DMCI
	1			25-FEB-09	APPROVED FOR CONSTRUCTION	ICV	NAR	MMF	ADV/DMCI

Scale:	N.T.S.	Company:	TOTAL E&P ANGOLA ANGOLA - BLOCK 17	Contractors:	Eni Saipem sa. Petromar TECHNICAL OFFICE - SOYO, YARD					
Original Paper size:	A3	Project name:	BLOCK 2 SINGLE CENTRAL PLATFORM (SCP)	Document title:	DECK ERECTION CELLAR DECK					
Plotter:	A1 A3	Company's contract N°:	N/A	Product:	N/A					
		Type of document:	DRAWING							
		Company's document identification:	-							
		Contractor's documentation identification:	Job N°	Origin	Unit	Discipline	Doc. Type	Seq. Num.	Sheet	Rev.
			F33099	PTM	200	STR	ERD	2300	1-9	2